



MONTHLY SUMMARY OF STATISTICS

WESTERN
AUSTRALIA

EMBARGO: 11:30AM (CANBERRA TIME) WED 30 SEPT 1998

CONTENTS

	<i>page</i>
Notes	2
 TABLES	
1 Population	4
2 Tourism	8
3 Employment	14
4 Retail	19
5 Construction	20
6 Production	23
7 Overseas Trade	27
8 Transport	29
9 Finance	30
10 Statistical Summary	31

- For more information about these and related statistics, contact Information Services on (08) 9360 5140 or refer to the back cover of this publication.

NOTES

FORTHCOMING ISSUES

<i>ISSUE</i>	<i>RELEASE DATE</i>
October 1998	30 October 1998
November 1998	30 November 1998
December 1998	23 December 1998



SYMBOLS AND OTHER USAGES

n.a.	not available
n.e.i.	not elsewhere included
n.p.	not available for publication but included in totals where applicable
n.y.a.	not yet available
—	nil or rounded to zero
..	not applicable
*	subject to sampling variability too high for most practical purposes
p	preliminary - figure or series subject to revision
r	figure or series revised since previous issue
—	break in continuity of series (where drawn between two consecutive figures or columns)



INQUIRIES

For information about other ABS statistics and services, please refer to the back of this publication.

For further information about these statistics, contact Information Services on (08) 9360 5140.

COLIN NAGLE
REGIONAL DIRECTOR, WESTERN AUSTRALIA

CONTENTS

Page

TABLES

Population

1.1	Estimated Resident Population	4
1.2	Components of Population Change	5
1.3	Registration of Births, Deaths, Marriages and Divorces	6
1.4	Rates of Births, Deaths, Marriages and Divorces	7

Tourism

2.1	Overseas Arrivals and Departures	8
2.2	Short-term Overseas Visitor Arrivals from Selected Countries	9
2.3	Short-term Overseas Visitor Arrivals by Air, Purpose of Journey: Holiday	10
2.4	Short-term Overseas Resident Departures to Selected Destinations	11
2.5	Short-term Overseas Resident Departures by Air, Purpose of Journey: Holiday	12
2.6	Tourist Accommodation	13

Employment

3.1	Labour Force Status: Seasonally Adjusted	14
3.2	Labour Force Status: Trend	15
3.3	Average Weekly Earnings of Employees	16
3.4	Industrial Disputes Causing Stoppage of Work	17
3.5	Employed Wage and Salary Earners by Industry and Sector	18

Retail

4.1	Monthly Retail Turnover: Original Estimates	19
-----	---	----

Construction

5.1	New Residential Building Approved	20
5.2	Non-Residential Building Approved	21
5.3	Selected Housing Price Indexes: Perth	21
5.4	Price Index of Materials Used in Building Other Than House Building: Perth	22

Production

6.1	Livestock Slaughtered	23
6.2	Meat Produced	23
6.3	Wool Receivals	24
6.4	Energy Production	25
6.5	Mineral Exploration: Expenditure by Type of Mineral Sought	26
6.6	Mineral Production	26

Overseas Trade

7.1	Imports by Selected Divisions	27
7.2	Exports by Selected Divisions	28

Transport

8.1	New Motor Vehicle Registrations	29
8.2	Vehicle Registration Statistics	29

Finance

9.1	Private New Capital Expenditure by Selected Industry Groups	30
-----	---	----

Statistical Summary

10.1	Statistical Summary	31
------	---------------------	----

1.1

ESTIMATED RESIDENT POPULATION

AT END OF PERIOD.....

	<i>Males</i>	<i>Females</i>	<i>Persons</i>
	no.	no.	no.
Financial Years			
1994-95	871 963	861 824	1 733 787
1995-96	887 577	877 679	1 765 256
1996-97 p	904 409	893 720	1 798 129
Calendar years			
1995	879 564	869 755	1 749 319
1996 p	896 082	885 850	1 781 932
1997 p	910 989	900 137	1 811 126
Quarters			
Sep 96 p	891 642	881 509	1 773 151
Dec 96 p	896 082	885 850	1 781 932
Mar 97 p	900 382	890 040	1 790 422
Jun 97 p	904 409	893 720	1 798 129
Sep 97 p	908 040	897 342	1 805 382
Dec 97 p	910 989	900 137	1 811 126

Source: ABS Catalogue No. 3101.0.

ANALYSIS OF TABLE 1.1

The estimated resident population of Western Australia at 31 December 1997 was 1,811,126, an increase of 5,744 in the December quarter and 29,194 since 31 December 1996. The annual growth rate during the calendar year 1997 was 1.6% compared with a rate of 1.9% for the previous twelve months.

1.2 COMPONENTS OF POPULATION CHANGE

	Natural increase	Net estimated overseas migration(a)	Net estimated interstate migration	Total increase
	no.	no.	no.	no.
Financial Years				
1994–95	14 794	10 508	5 101	30 778
1995–96	13 953	12 339	4 066	31 469
1996–97 p	14 280	13 327	5 266	32 873
Calendar years				
1995	14 414	13 048	4 513	32 724
1996 p	13 751	12 518	5 792	32 613
1997 p	14 041	12 115	3 038	29 194
Quarters				
Sep 96 p	3 108	3 490	1 297	7 895
Dec 96 p	3 369	3 543	1 869	8 781
Mar 97 p	3 953	4 533	4	8 490
Jun 97 p	3 850	1 761	2 096	7 707
Sep 97 p	2 935	3 884	434	7 253
Dec 97 p	3 303	1 937	504	5 744

(a) Includes an adjustment for 'category jumping'.

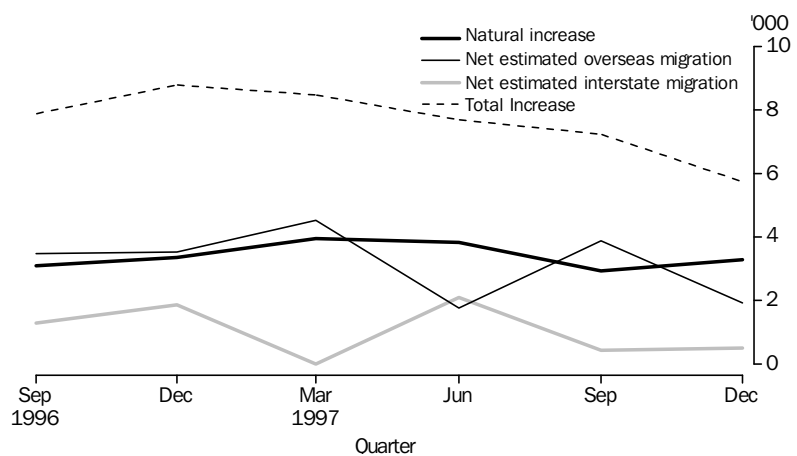
Source: ABS Catalogue No. 3101.0.

ANALYSIS OF TABLE 1.2

In the December quarter 1997, the population increased by 5,744 compared with an increase of 7,253 in the previous quarter. Both the natural increase and net estimated interstate migration were higher than in the September quarter 1997. However, net estimated overseas migration was less than half the number in the previous quarter.

For the year ended 31 December 1997, the increase of 29,194 was 10.5% lower than the increase in the previous twelve months.

COMPONENTS OF POPULATION CHANGE, WESTERN AUSTRALIA



Source: ABS Catalogue No. 3101.0.

1.3

REGISTRATION OF BIRTHS, DEATHS, MARRIAGES AND DIVORCES

	Live Births (a)	Infant Deaths (a)	Total Deaths (a)	Marriages	Divorces
Financial Years					
1994-95	25 104	137	10 310	10 381	4 930
1995-96	24 614	140	10 661	10 178	5 195
1996-97 p	24 837	135	10 557	10 372	4 931
Calendar years					
1995	24 817	133	10 403	10 404	5 040
1996 p	24 742	143	10 991	10 294	4 959
1997 p	24 856	129	10 815	10 456	5 046
Quarters					
Sep 96 p	6 201	38	3 093	1 458	1 294
Dec 96 p	6 066	38	2 697	3 448	1 271
Mar 97 p	6 298	31	2 345	2 904	1 233
Jun 97 p	6 272	28	2 422	2 562	1 133
Sep 97 p	6 164	28	3 229	1 458	1 360
Dec 97 p	6 122	42	2 819	3 532	1 320

(a) NOTE: With the exception of preliminary data estimates of births and deaths are included by State or Territory of usual residence and year of occurrence. For preliminary estimates births and deaths are included by State or Territory of usual residence and year of registration. Prior to this issue births and deaths data were presented by State or Territory of registration and year of registration.

Source: ABS Catalogue No. 3101.0.

ANALYSIS OF TABLE 1.3

The number of live births in the December quarter 1997 fell by 42 or 0.7% on the previous quarter and was 56 or 0.9% more than the number in the same quarter of 1996.

Total deaths decreased by 410 or 12.7% from the September quarter 1997, and were 122 or 4.5% higher than the number in the December quarter 1996.

Infant deaths in the December quarter 1997 increased by 14 or 50.0% from the September quarter 1997, and were 10.5% higher than in the December quarter of the previous year.

The number of marriages in the December quarter 1997 rose by 142.2% (or 2,074) from the previous quarter, but was only 2.4% higher than in the same quarter of 1996.

The number of divorces decreased from 1,360 in the September quarter to 1,320 in the December quarter 1997, a decrease of 2.9%. However, the number was 3.9% higher than in the December quarter 1996.

1.4

RATES OF BIRTHS, DEATHS, MARRIAGES AND DIVORCES

	Live Births(a)	Infant Deaths(b)	Total Deaths(a)	Marriages(a)	Divorces(a)
Financial Years					
1994–95	14.6	5.5	6.0	6.0	2.9
1995–96	14.1	5.7	6.1	5.8	3.0
1996–97 p	13.9	5.4	5.9	5.8	2.8
Calendar years					
1995	14.3	5.4	6.0	6.0	2.9
1996 p	14.0	5.8	6.2	5.8	2.8
1997 p	13.8	5.2	6.0	5.8	2.8
Quarters					
Sep 96 p	14.0	6.1	7.0	3.3	2.9
Dec 96 p	13.7	6.3	6.1	7.8	2.9
Mar 97 p	14.1	4.9	5.3	6.5	2.8
Jun 97 p	14.0	4.5	5.4	5.7	2.5
Sep 97 p	13.7	4.5	7.2	3.2	3.0
Dec 97 p	13.5	6.9	6.2	7.8	2.9

(a) For financial and calendar years the rate is per 1,000 estimated resident population at 31 December and 30 June, respectively. For quarters, the rate is per 1,000 of the average of the previous and current quarterly populations.

(b) Infant deaths per 1,000 live births.

Source: ABS Catalogue No. 3101.0.

ANALYSIS OF TABLE 1.4

In the December quarter 1997, the infant death rate increased significantly to 6.9 infant deaths per 1,000 live births. This was marginally higher than the rate of 6.3 in the same quarter of the previous year.

The crude birth rate, crude death rate and crude divorce rate were lower than in the September quarter 1997, and the crude marriage rate was higher than in the previous quarter.

In comparison to the same quarter of the previous year, the crude birth rate was lower, the crude death rate was higher, and the crude marriage and divorce rates were the same.

For more information regarding tables on Vital statistics, please contact Carmel Ryan on (08) 9360 5385.

2.1 OVERSEAS ARRIVALS AND DEPARTURES

	SHORT-TERM ARRIVALS.....			LONG-TERM ARRIVALS.....		Total Arrivals
	Permanent Arrivals	West Australian Residents	Overseas Visitors	West Australian Residents	Overseas Visitors	
Financial Years						
1995-96	11 320	308 100	361 190	8 600	10 170	699 380
1996-97	10 520	334 750	397 610	8 880	11 650	763 410
1997-98	9 750	379 660	402 400	9 340	12 880	814 000
Months						
Apr 97	830	24 030	33 000	580	670	59 110
May 97	790	24 280	25 000	540	500	51 110
Jun 97	760	27 310	28 540	580	680	57 850
Jul 97	750	36 790	30 820	670	2 110	71 140
Aug 97	720	33 360	26 780	600	690	62 150
Sep 97	720	33 830	31 640	650	640	67 490
Oct 97	790	43 460	37 810	720	860	83 630
Nov 97	950	28 170	37 840	890	620	68 470
Dec 97	810	19 980	49 380	1 440	590	72 190
Jan 98	900	39 640	34 480	960	1 740	77 720
Feb 98	820	26 380	32 550	680	2 990	63 420
Mar 98	810	27 750	33 270	660	610	63 110
Apr 98	780	29 340	32 150	750	740	63 750
May 98	730	29 430	28 280	600	580	59 610
Jun 98	950	31 540	27 400	730	700	61 330

	SHORT-TERM DEPARTURES.....			LONG-TERM DEPARTURES.....		Total Departures
	Permanent Departures	West Australian Residents	Overseas Visitors	West Australian Residents	Overseas Visitors	
Financial Years						
1995-96	3 890	305 910	366 340	7 680	5 480	689 290
1996-97	3 610	339 990	389 530	8 080	6 180	747 390
1997-98	4 000	387 490	402 850	8 500	7 450	810 300
Months						
Apr 97	330	25 870	36 390	750	390	63 730
May 97	290	30 520	28 360	630	400	60 210
Jun 97	280	29 910	29 840	550	640	61 230
Jul 97	360	40 020	27 080	690	710	68 870
Aug 97	290	33 010	29 840	700	400	64 250
Sep 97	260	40 300	28 230	630	480	69 910
Oct 97	230	30 750	31 790	530	400	63 700
Nov 97	320	28 280	37 280	580	730	67 180
Dec 97	300	33 360	40 570	710	1 520	76 460
Jan 98	450	25 380	45 410	1 160	570	72 960
Feb 98	330	25 080	30 840	690	410	57 360
Mar 98	320	31 390	32 990	680	560	65 930
Apr 98	370	32 090	37 100	770	450	70 760
May 98	350	33 080	32 590	730	460	67 200
Jun 98	420	34 750	29 120	650	780	65 720

Source: ABS Unpublished Overseas Arrivals and Departures Table PMTRO001. Since figures have been rounded to the nearest ten, discrepancies may occur between sums of component items and totals.

The total of 61,330 overseas arrivals in June 1998 was 1,720 more than in the previous month and 3,480 higher than in June 1997.

In June 1998, 31,540 residents returned from short-term overseas visits, an increase of 7% on May 1998. The number of overseas visitors arriving in Western Australia for short-term visits decreased by 3% on May 1998, and by 4% on June 1997 figures.

There were 730 residents returning to Western Australia in June 1998 after a long-term stay overseas. This was a 22% increase on the previous month. Arrivals of long-term overseas visitors increased by 21% on May 1998, and increased by 3% on June 1997 figures.

Total departures of 65,720 in June 1998 decreased by 2% on the previous month and were 7% higher than recorded in June 1997.

The number of short-term departures of Western Australian residents increased by 5% on May 1998, and by 16% on June 1997 figures. Departures of overseas visitors decreased by 11% on May 1998.

2.2 SHORT-TERM OVERSEAS VISITOR ARRIVALS FROM SELECTED COUNTRIES(a)

	COUNTRY OF ORIGIN.....					Total(b)
	New Zealand	UK & Ireland	Indonesia	Japan	Singapore	
Financial Years						
1995-96	24 200	59 220	49 270	30 120	64 690	361 180
1996-97	26 420	69 460	51 600	33 930	63 950	397 610
1997-98	26 410	81 390	34 380	32 620	73 140	402 400
Months						
Apr 97	2 590	5 710	4 120	2 850	5 430	33 000
May 97	1 880	2 510	2 910	1 270	4 770	25 000
Jun 97	2 180	3 300	4 250	1 100	9 150	28 540
Jul 97	2 090	3 070	6 730	2 560	3 880	30 820
Aug 97	2 250	3 120	2 610	4 060	3 940	26 780
Sep 97	2 560	5 240	2 350	3 190	5 800	31 640
Oct 97	3 320	8 240	3 290	2 480	6 240	37 810
Nov 97	2 350	8 840	2 670	2 650	6 920	37 840
Dec 97	2 520	12 330	3 300	3 260	8 650	49 380
Jan 98	1 420	8 350	3 790	2 930	3 900	34 480
Feb 98	1 150	9 630	2 160	2 910	3 660	32 550
Mar 98	2 010	8 900	970	3 200	6 000	33 280
Apr 98	2 150	6 300	2 250	2 060	7 630	32 150
May 98	2 470	3 820	2 470	2 010	6 400	28 280
Jun 98	2 110	3 540	1 770	1 290	10 110	27 400

(a) Comprises travellers whose intended or actual stay is less than twelve months.

(b) Total includes countries not listed in this table.

Source: ABS Unpublished Overseas Arrivals and Departures Table PMTR0013.

The total of 27,400 short-term overseas visitor arrivals in June 1998 represented a decrease of 3% on May 1998, and 4% on June 1997.

Short-term visitor arrivals from Singapore increased by 58% on May 1998, and by 11% on June 1997 and represented 37% of all short-term visitor arrivals.

2.3

SHORT-TERM OVERSEAS VISITOR ARRIVALS BY AIR, PURPOSE OF JOURNEY: HOLIDAY

COUNTRY OF ORIGIN.....

	<i>New Zealand</i>	<i>UK & Ireland</i>	<i>Indonesia</i>	<i>Japan</i>	<i>Malaysia</i>	<i>Singapore</i>	<i>Thailand</i>	<i>United States</i>	<i>Total(a)</i>
Financial Years									
1995-96	6 790	19 010	35 610	23 840	20 800	47 520	8 770	3 250	200 560
1996-97	6 670	24 050	33 870	27 870	23 600	45 350	10 230	2 590	215 820
1997-98	7 830	27 660	19 580	26 650	23 920	50 470	5 880	3 520	205 550
Months									
Apr 97	570	1 700	2 510	2 380	1 860	3 440	1 150	150	16 340
May 97	270	860	1 920	1 000	3 420	3 600	880	310	13 760
Jun 97	760	1 000	2 840	890	1 340	7 010	370	240	16 210
Jul 97	590	1 030	4 230	2 090	1 640	1 840	580	180	15 390
Aug 97	850	1 020	1 470	2 960	2 660	2 740	380	310	15 040
Sep 97	940	1 770	1 150	2 530	3 180	4 230	130	280	17 170
Oct 97	970	2 870	1 600	2 160	3 170	4 180	370	180	19 380
Nov 97	710	2 920	1 780	2 160	2 260	5 260	160	460	20 080
Dec 97	450	3 960	2 580	2 880	2 560	7 110	2 060	220	27 340
Jan 98	470	3 070	2 200	2 580	1 460	2 460	110	330	16 725
Feb 98	220	3 610	470	2 520	700	1 200	810	140	12 880
Mar 98	410	2 740	500	2 690	990	3 660	110	570	15 320
Apr 98	800	2 220	1 340	1 610	1 710	5 230	770	250	16 560
May 98	720	1 280	1 170	1 360	2 480	4 530	230	290	13 900
Jun 98	710	1 160	1 080	1 110	1 110	8 040	160	330	15 780

(a) Total includes countries not listed in this table.

Source: ABS Unpublished Overseas Arrivals and Departures Table PMTWAT31 for monthly figures and PMTR0031 for financial year figures.

ANALYSIS OF TABLE 2.3

A total of 15,780 short-term overseas visitors arrived by air for holidays in Western Australia in June 1998, an increase of 14% on May 1998. Over 50% (8040) of these were from Singapore.

2.4

SHORT-TERM DEPARTURES OF RESIDENTS TO SELECTED DESTINATIONS (a)

COUNTRY OF DESTINATION.....

	New Zealand	UK & Ireland	Indonesia	Malaysia	Singapore	Total(a)
Financial Years						
1995-96	25 100	44 070	68 860	22 780	29 430	305 910
1996-97	26 580	50 320	89 030	23 620	26 770	339 990
1997-98	30 360	54 190	103 090	25 820	34 520	387 490
Months						
Apr 97	2 360	3 670	5 900	1 540	1 860	25 870
May 97	1 180	7 410	6 460	1 800	2 490	30 520
Jun 97	930	6 230	8 570	1 800	1 840	29 910
Jul 97	2 110	7 360	10 790	3 140	2 720	40 020
Aug 97	1 650	4 920	10 470	2 260	3 380	33 010
Sep 97	2 450	5 090	12 940	2 180	3 400	40 300
Oct 97	2 470	3 190	10 870	1 840	2 260	30 750
Nov 97	1 950	2 840	8 100	2 060	2 660	28 280
Dec 97	5 380	4 550	6 530	2 340	2 310	33 360
Jan 98	2 630	2 260	6 060	1 990	2 590	25 380
Feb 98	2 720	2 420	6 980	2 100	2 700	25 080
Mar 98	2 590	4 370	8 780	1 880	3 940	31 390
Apr 98	3 390	4 490	6 690	2 160	2 590	32 090
May 98	1 470	6 460	6 920	1 520	2 790	33 080
Jun 98	1 530	6 230	7 960	2 350	3 210	34 750

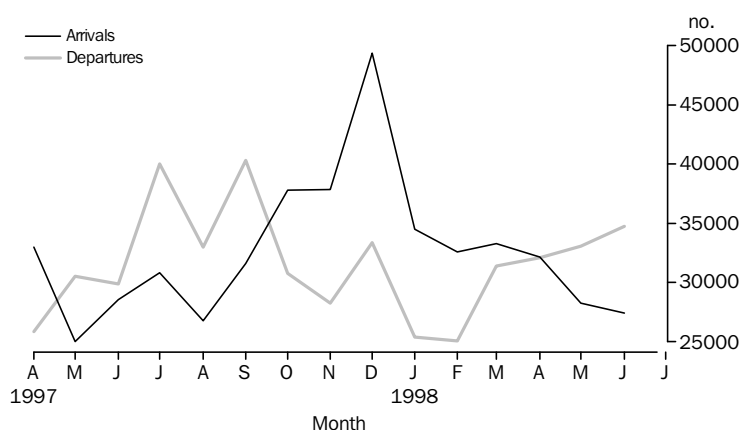
(a) Total includes countries not listed in this table.

Source: ABS Unpublished Overseas Arrivals and Departures Table PMTR0013.

ANALYSIS OF TABLE 2.4

For June 1998, the total of 34,750 short term departures of residents from Western Australia increased by 5%, on May 1998, and 16% on June 1997. Short-term departures of residents to Indonesia increased by 15%, representing 23% of all short-term resident departures. Short-term departures to Malaysia increased by 55% to 2,350 residents.

SHORT-TERM ARRIVALS OF OVERSEAS VISITORS AND DEPARTURES OF RESIDENTS BY MONTH



Source: ABS Unpublished Overseas Arrivals and Departures Table PMTR0013.

2.5 SHORT-TERM DEPARTURES OF RESIDENTS BY AIR TO SELECTED DESTINATIONS: HOLIDAY

COUNTRY OF DESTINATION.....

	<i>New Zealand</i>	<i>UK & Ireland</i>	<i>Indonesia</i>	<i>Malaysia</i>	<i>Singapore</i>	<i>Thailand</i>	<i>United States</i>	<i>Total (a)</i>
Financial Years								
1995-96	10 120	18 420	53 060	10 430	15 670	12 750	9 650	160 120
1996-97	10 860	23 760	72 640	10 660	13 480	9 790	9 540	186 540
1997-98	12 500	25 910	85 760	12 820	19 560	18 320	11 440	222 180
Months								
Apr 97	1 220	1 960	4 080	310	550	810	610	12 910
May 97	370	4 020	5 120	630	1 120	530	800	15 720
Jun 97	420	3 320	6 290	900	740	740	840	16 580
Jul 97	1 120	4 340	9 560	2 110	1 360	1 280	1 200	25 110
Aug 97	860	2 240	8 650	910	2 270	590	850	19 590
Sep 97	1 170	2 840	11 260	780	1 800	1 640	1 950	25 120
Oct 97	1 260	1 700	9 720	840	1 280	1 980	960	19 410
Nov 97	970	1 120	6 270	920	1 140	1 220	550	14 380
Dec 97	1 800	1 860	5 330	1 420	1 500	1 170	770	17 810
Jan 98	1 050	520	4 990	610	1 460	600	600	12 400
Feb 98	1 010	1 180	5 550	930	1 850	1 040	570	13 920
Mar 98	1 080	1 990	7 020	980	2 180	1 300	690	17 300
Apr 98	1 340	1 820	5 510	1 370	1 670	2 400	910	18 300
May 98	490	3 010	5 530	720	1 500	3 020	1 070	18 650
Jun 98	350	3 300	6 320	1 220	1 490	2 090	1 250	19 940

(a) Total includes countries not listed in this table.

Source: ABS Unpublished Overseas Arrivals and Departures Table PMTWAT31 for monthly figures and PMTRO031 for financial year figures.

ANALYSIS OF TABLE 2.5

There were 19,940 short-term departures by air of Western Australian residents for holidays abroad in June 1998. This was 1290 or 7% more departures than in May 1998 and 3360 or 20% more than in June 1997.

In June 1998, the number of Western Australians who chose Malaysia, the United States, Indonesia and the United Kingdom for their holiday destination increased by 69%, 17% and 14% and 10% respectively, compared to the previous month.

With 32% of all short-term departures of residents in June 1998, Indonesia continues to be the favoured holiday destination for Western Australians.

For more information regarding Overseas Arrivals and Departures, please contact Carmel Ryan on (08) 9360 5385.

2.6

TOURIST ACCOMMODATION

HOTELS, MOTELS, GUEST HOUSES AND SERVICED APARTMENTS....

	<i>Establishments</i>	<i>Guest rooms</i>	<i>Employment</i>	<i>Room occupancy rates</i>	<i>Guest arrivals</i>	<i>Takings from accommodation</i>
	Number	Number	Persons	%	'000	\$'000
Months						
Jan 98	n.a.	n.a.	n.a.	59	201	29 620
Feb 98	n.a.	n.a.	n.a.	57	172	25 017
Mar 98	294	16 596	9 685	59	191	28 190

Source: ABS Product No. 8635.5.40.001. (The December quarter 1997 issue of *Tourist Accommodation, Western Australia*, Cat. no. 8635.5, was the final issue of this publication).

Note: The scope of the ABS quarterly Survey of Tourist Accommodation (STA) has changed since the December quarter 1997. Some units will have been reclassified and as a result, data will not be strictly comparable with previously published data for particular accommodation types.

From the March quarter 1998, only those in-scope establishments with 15 or more rooms or units are covered by the survey.

From the March quarter 1998, survey results are aggregated to Tourism Regions as defined by relevant State and Territory Tourist Commissions or equivalent organisations.

As part of the future collection strategy of the STA, significant caravan parks, visitor hostels and remaining holiday flats, units and houses will be surveyed triennially, commencing with a year 2000 reference year.

For more information regarding the changes to the STA and the data available from this collection, please refer to the ABS publication Catalogue No. 8635.0. Data presented in this publication which relate to the 1997 calendar year have been recompiled on the new basis, and so will differ to data presented in earlier issues.

For more information relating to Tourist Accommodation, please contact Pam Prince on 9360 5207.

3.1

LABOUR FORCE STATUS (AGED 15 YEARS AND OVER): Seasonally Adjusted

	<i>Employed full-time</i>	<i>Total employed</i>	<i>Total unemployed</i>	<i>Unemployment rate</i>	<i>Participation rate</i>
	'000	'000	'000	%	%
Males					
Jun 97	437.5	495.3	38.2	7.2	76.5
Jul 97	438.4	491.7	39.4	7.4	76.0
Aug 97	440.5	497.4	38.9	7.3	76.6
Sep 97	442.2	497.1	39.9	7.4	76.6
Oct 97	439.9	498.7	33.6	6.3	75.8
Nov 97	443.7	501.7	38.2	7.1	76.7
Dec 97	445.5	502.7	38.7	7.1	76.8
Jan 98	447.0	503.0	37.2	6.9	76.5
Feb 98	441.0	500.2	36.3	6.8	75.9
Mar 98	443.0	499.9	37.9	7.0	75.9
Apr 98	443.1	502.2	36.0	6.7	75.9
May 98	443.4	504.3	37.7	7.0	76.3
Jun 98	442.6	500.7	45.0	8.2	76.7
Jul 98	442.0	496.5	43.3	8.0	75.8
Aug 98	443.8	499.8	41.7	7.7	75.9
Females					
Jun 97	188.0	358.2	27.7	7.2	54.8
Jul 97	196.7	362.7	26.9	6.9	55.2
Aug 97	195.7	363.2	28.6	7.3	55.4
Sep 97	199.4	374.3	25.4	6.3	56.4
Oct 97	196.6	367.1	26.6	6.7	55.5
Nov 97	197.7	365.7	26.7	6.8	55.2
Dec 97	197.6	364.5	29.1	7.4	55.3
Jan 98	201.8	367.5	29.2	7.4	55.7
Feb 98	195.4	372.1	28.9	7.2	56.2
Mar 98	202.7	371.0	28.0	7.0	55.8
Apr 98	196.6	373.7	28.8	7.2	56.3
May 98	199.8	379.3	28.0	6.9	56.9
Jun 98	205.6	386.0	24.7	6.0	57.3
Jul 98	202.6	389.1	27.3	6.6	58.0
Aug 98	206.7	384.9	24.9	6.1	57.0
Persons					
Jun 97	625.5	853.5	65.9	7.2	65.6
Jul 97	635.1	854.4	66.3	7.2	65.6
Aug 97	636.3	860.6	67.5	7.3	66.0
Sep 97	641.6	871.4	65.3	7.0	66.5
Oct 97	636.5	865.8	60.2	6.5	65.6
Nov 97	641.4	867.4	64.9	7.0	65.9
Dec 97	643.1	867.2	67.8	7.2	66.0
Jan 98	648.8	870.5	66.4	7.1	66.0
Feb 98	636.4	872.3	65.2	7.0	66.0
Mar 98	645.7	870.8	65.9	7.0	65.8
Apr 98	639.8	875.9	64.8	6.9	66.0
May 98	643.2	883.7	65.8	6.9	66.6
Jun 98	648.2	886.7	69.6	7.3	66.9
Jul 98	644.6	885.5	70.6	7.4	66.8
Aug 98	650.5	884.8	66.6	7.0	66.4

Source: ABS Catalogue No. 6202.0.

ANALYSIS OF TABLE 3.1

The seasonally adjusted unemployment rate decreased by 0.4 percentage points to 7.0% in August 1998.

The seasonally adjusted number of persons unemployed decreased by 4,000 to 66,600, and the number of employed persons fell by 700 to 884,800.

Western Australia's seasonally adjusted participation rate for August 1998 fell 0.4 percentage point to 66.4%, and continues to be the highest of all the States.

3.2 LABOUR FORCE STATUS (AGED 15 YEARS AND OVER): Trend (a)

	Employed full-time	Total employed	Total unemployed	Unemployment rate	Participation rate
	'000	'000	'000	%	%
Males					
Jun 97	437.5	493.2	38.2	7.2	76.2
Jul 97	438.6	494.4	38.4	7.2	76.3
Aug 97	439.9	496.1	38.4	7.2	76.4
Sep 97	441.3	497.8	38.1	7.1	76.4
Oct 97	442.5	499.5	37.8	7.0	76.5
Nov 97	443.5	500.7	37.4	7.0	76.5
Dec 97	444.0	501.5	37.1	6.9	76.4
Jan 98	444.2	501.9	36.8	6.8	76.3
Feb 98	443.9	502.0	36.9	6.8	76.2
Mar 98	443.5	501.9	37.4	6.9	76.2
Apr 98	443.0	501.5	38.3	7.1	76.1
May 98	442.8	501.1	39.6	7.3	76.1
Jun 98	442.8	500.5	41.0	7.6	76.1
Jul 98	442.8	499.9	42.2	7.8	76.1
Aug 98	443.1	499.4	43.2	8.0	76.1
Females					
Jun 97	192.2	360.2	27.8	7.2	55.1
Jul 97	194.0	362.5	27.0	6.9	55.2
Aug 97	195.7	364.8	26.7	6.8	55.4
Sep 97	197.0	366.5	26.7	6.8	55.5
Oct 97	197.9	367.3	27.0	6.9	55.6
Nov 97	198.4	367.4	27.5	7.0	55.6
Dec 97	198.5	367.3	28.1	7.1	55.5
Jan 98	198.6	367.7	28.6	7.2	55.6
Feb 98	198.8	369.4	28.8	7.2	55.8
Mar 98	199.2	372.4	28.6	7.1	56.1
Apr 98	200.0	376.1	28.0	6.9	56.5
May 98	201.2	379.7	27.3	6.7	56.8
Jun 98	202.5	383.0	26.7	6.5	57.1
Jul 98	203.8	385.8	26.1	6.3	57.3
Aug 98	205.3	387.8	25.6	6.2	57.5
Persons					
Jun 97	629.7	853.3	66.0	7.2	65.6
Jul 97	632.6	856.9	65.5	7.1	65.7
Aug 97	635.7	860.9	65.0	7.0	65.8
Sep 97	638.3	864.4	64.8	7.0	65.9
Oct 97	640.4	866.8	64.8	7.0	66.0
Nov 97	641.9	868.1	65.0	7.0	66.0
Dec 97	642.5	868.8	65.2	7.0	65.9
Jan 98	642.7	869.7	65.4	7.0	65.9
Feb 98	642.7	871.5	65.7	7.0	66.0
Mar 98	642.7	874.3	66.0	7.0	66.1
Apr 98	643.1	877.6	66.4	7.0	66.3
May 98	644.0	880.8	67.0	7.1	66.4
Jun 98	645.3	883.5	67.7	7.1	66.6
Jul 98	646.7	885.6	68.3	7.2	66.7
Aug 98	648.4	887.2	68.8	7.2	66.7

(a) Trend estimates for the previous six months have been revised.

Source: ABS Catalogue No. 6202.0.

ANALYSIS OF TABLE 3.2

The trend estimate of the unemployment rate has remained at 7.2% in August 1998.

For more information regarding these tables, please contact Neil Griffin on (08) 9360 5234.

3.3

AVERAGE WEEKLY EARNINGS OF EMPLOYEES: Trend

	FULL TIME ADULTS.....		ALL PERSONS
	<i>Ordinary time earnings</i>	<i>Total earnings</i>	<i>Total earnings</i>
	\$	\$	\$
Males			
21 Feb 97	748.60	809.50	695.50
16 May 97	759.50	819.50	703.70
16 Aug 97	771.60	829.40	711.70
21 Nov 97	781.20	839.30	720.80
20 Feb 98	789.80	850.80	732.70
15 May 98	798.50	863.90	745.30
Females			
21 Feb 97	588.50	600.80	417.30
16 May 97	593.20	605.10	419.60
16 Aug 97	598.70	610.00	419.60
21 Nov 97	604.00	615.30	416.20
20 Feb 98	609.10	621.40	411.50
15 May 98	614.20	628.30	406.50
Persons			
21 Feb 97	691.30	735.00	558.90
16 May 97	698.60	740.90	562.60
16 Aug 97	706.80	747.20	563.80
21 Nov 97	714.70	755.20	564.70
20 Feb 98	722.90	766.00	567.60
15 May 98	731.80	778.70	571.50

Source: ABS Catalogue No. 6302.0.

3.4 INDUSTRIAL DISPUTES CAUSING STOPPAGE OF WORK

WORKERS INVOLVED.....

	<i>Number of Disputes</i>	<i>Directly</i>	<i>Indirectly</i>	<i>Total</i>	<i>Working days lost</i>
	Number	'000	'000	'000	'000
Calendar Year					
1995	70	99.7	0.0	99.7	101.6
1996	54	36.2	0.0	36.2	47.3
1997	71	30.9	0.9	31.7	60.1
Months					
Apr 97	7	16.9	0.3	17.2	20.2
May 97	9	6.4	0.1	6.5	9.8
Jun 97	6	4.9	0.0	4.9	3.7
Jul 97	10	1.5	0.0	1.5	0.8
Aug 97	5	0.5	0.0	0.5	0.8
Sep 97	10	1.8	0.0	1.8	1.6
Oct 97	6	2.2	0.0	2.2	1.0
Nov 97	13	1.8	0.0	1.8	3.4
Dec 97	9	0.4	0.0	0.4	0.4
Jan 98	6	0.8	0.0	0.8	2.3
Feb 98	6	0.6	0.1	0.7	1.1
Mar 98	5	2.1	0.0	2.1	4.2
Apr 98	6	r 3.5	0.0	r 3.5	r 4.4
May 98	r 6	r 4.1	0.0	r 4.1	r 2.3
Jun 98	9	4.0	0.0	4.0	5.8

Source: Industrial Disputes, Unpublished Data.

Note: The waterfront dispute which commenced on 7 April 1998 has been excluded from the industrial disputes statistics in this publication, because the industrial action that took place did not constitute an 'industrial dispute' as defined by the ABS for purposes of collecting and compiling these statistics.

In ABS industrial disputes statistics, an industrial dispute is defined as a withdrawal from work by a group of employees (i.e. a strike), or a refusal by an employer or a number of employers to permit some or all of their employees to work (i.e. a lockout), each withdrawal or refusal being made in order to enforce a demand, to resist a demand, or to express a grievance. That is, the statistics cover employee strikes and employer lockouts, but do not cover other action due to labour disputes. (See *Industrial Disputes, Australia*, cat no. 6321.0 Explanatory Notes and Glossary for more details.)

3.5

WAGE AND SALARY EARNERS: INDUSTRY-SECTOR

	NUMBER OF EMPLOYEES.....						GROSS EARNINGS
	Nov 1996	Feb 1997	May 1997	Aug 1997	Nov 1997	Feb 1998	Mar qtr 1998
	'000	'000	'000	'000	'000	'000	\$m
Industry							
Mining	29.2	28.9	30.1	29.3	30.5	28.2	446.6
Manufacturing	69.0	74.0	67.7	69.1	65.5	65.6	577.7
Electricity, gas and water supply	6.9	7.0	7.0	6.8	6.9	6.8	87.3
Construction	32.4	29.8	34.2	31.4	35.1	37.6	402.6
Wholesale trade	45.1	43.3	45.7	39.7	42.3	40.3	349.5
Retail trade	116.9	104.0	108.2	105.8	110.4	102.6	423.9
Accommodation, cafes & restaurants	37.1	37.9	37.0	38.9	41.6	40.5	188.3
Transport and storage	21.8	23.5	25.2	23.6	24.4	22.7	225.4
Communication services	10.1	10.4	10.1	9.8	9.6	9.5	96.5
Finance & insurance	18.6	23.4	24.6	24.0	23.3	27.7	245.3
Property & business services	67.4	85.6	87.2	89.2	83.7	86.6	587.8
Government administration and defence	32.2	32.9	31.5	30.6	31.9	31.9	273.4
Education	65.4	59.9	63.7	63.3	67.3	61.8	472.7
Health & community services	72.4	67.9	67.9	70.2	70.8	71.1	478.6
Cultural & recreational services	9.2	16.5	15.3	18.3	15.5	15.9	82.8
Personal & other services	29.3	26.9	23.2	23.0	23.9	22.8	145.1
All industries (a)	664.4	673.6	680.1	674.5	684.5	673.5	5 099.0
Sector							
Private	515.5	528.3	534.0	530.0	535.8	530.6	3 810.4
Public	149.0	145.3	146.1	144.5	148.8	142.8	1 288.6

	November 1997.....			February 1998.....		
	Full-time	Part-time	Persons	Full-time	Part-time	Persons
	'000	'000	'000	'000	'000	'000
Industry						
Mining	29.9	0.6	30.5	26.5	1.7	28.2
Manufacturing	59.0	6.5	65.5	61.0	4.7	65.6
Electricity, gas and water supply	6.7	0.2	6.9	6.6	0.2	6.8
Construction	31.2	3.9	35.1	33.9	3.7	37.6
Wholesale trade	31.0	11.3	42.3	31.2	9.1	40.3
Retail trade	46.7	63.7	110.4	41.6	61.0	102.6
Accommodation, cafes & restaurants	20.1	21.5	41.6	18.3	22.2	40.5
Transport and storage	21.3	3.1	24.4	19.5	3.2	22.7
Communication services	8.2	1.4	9.6	8.1	1.4	9.5
Finance & insurance	16.9	6.4	23.3	21.1	6.6	27.7
Property & business services	50.0	33.8	83.7	51.2	35.4	86.6
Government administration and defence	25.9	6.0	31.9	25.9	6.0	31.9
Education	41.0	26.3	67.3	39.5	22.3	61.8
Health & community services	34.9	35.9	70.8	34.0	37.1	71.1
Cultural & recreational services	6.2	9.2	15.5	5.9	10.0	15.9
Personal & other services	15.7	8.2	23.9	15.8	6.9	22.8
All industries (a)	446.5	238.0	684.5	441.7	231.8	673.5
Sector						
Private	338.8	196.9	535.8	336.1	194.5	530.6
Public	107.7	41.7	148.8	105.6	37.2	142.8

(a) Includes employees of government agencies classified to Agriculture, forestry and fishing.

Source: ABS Catalogue No. 6248.0.

4.1

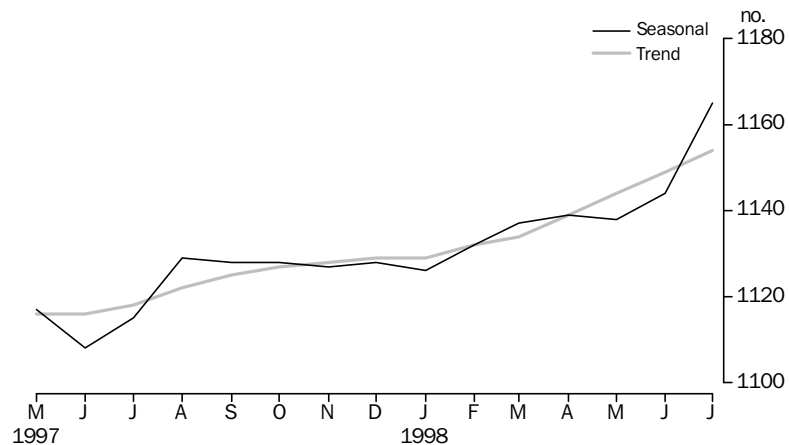
MONTHLY RETAIL TURNOVER

	Food	Department stores	Clothing and soft goods	Other household goods	Recreational goods
	\$m	\$m	\$m	\$m	\$m
Months					
May 97	454.4	107.0	65.2	174.2	59.1
Jun 97	417.5	81.2	53.2	163.1	55.3
Jul 97	445.1	95.3	50.2	167.8	59.6
Aug 97	445.8	87.5	45.2	170.2	56.3
Sep 97	437.8	94.7	44.3	173.5	57.7
Oct 97	478.5	104.8	53.8	182.4	60.4
Nov 97	464.4	110.3	50.8	190.3	60.2
Dec 97	546.4	188.3	70.6	227.9	86.5
Jan 98	503.8	87.6	54.0	184.5	56.4
Feb 98	451.5	72.9	42.6	156.5	52.1
Mar 98	475.8	83.4	48.1	176.8	51.9
Apr 98	488.4	101.7	48.7	171.9	54.7
May 98	497.4	100.5	52.2	172.5	54.4
Jun 98	465.8	92.0	49.3	180.8	53.4
Jul 98	511.0	106.7	54.0	159.7	60.9

	Hospitality and services	Other	Total	Seasonally adjusted	Trend estimates
	\$m	\$m	\$m	\$m	\$m
Months					
May 97	163.1	103.2	1 126.2	r 1116.5	1 115.7
Jun 97	157.9	91.2	1 019.4	r 1108.4	1 116.0
Jul 97	173.4	105.8	1 097.2	r 1115.0	1 118.1
Aug 97	171.8	103.7	1 080.6	r 1129.0	1 122.0
Sep 97	171.9	111.6	1 091.5	r 1128.0	1 125.3
Oct 97	171.1	113.1	1 164.2	r 1127.8	1 127.1
Nov 97	168.3	109.4	1 153.7	r 1126.9	1 128.0
Dec 97	193.1	151.7	1 464.4	r 1127.8	1 128.6
Jan 98	155.0	96.4	1 137.8	r 1126.0	1 129.3
Feb 98	145.0	87.0	1 007.6	r 1132.3	1 131.2
Mar 98	153.2	88.5	1 077.7	r 1136.8	1 134.4
Apr 98	148.7	87.0	1 101.1	r 1139.0	1 138.6
May 98	152.5	90.4	1 120.0	r 1138.0	1 143.5
Jun 98	139.6	88.4	1 069.3	r 1144.3	1 148.8
Jul 98	156.3	93.3	1 142.0	1 165.3	1 154.5

Source: ABS Catalogue No. 8501.0.

MONTHLY RETAIL TURNOVER, WESTERN AUSTRALIA



Source: ABS Catalogue No. 8501.0.

5.1

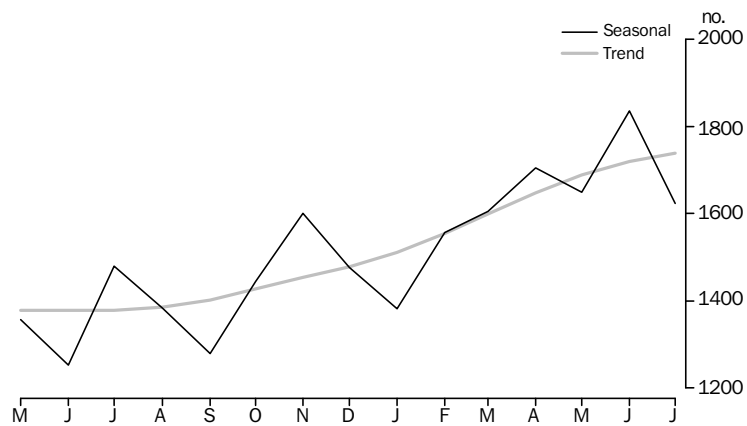
DWELLING UNITS APPROVED

	HOUSES.....		OTHER RESIDENTIAL BUILDINGS.....		TOTAL (a).....	
	Dwelling Units	Value	Dwelling Units	Value	Dwelling Units	Value
	No.	\$m	No.	\$m	No.	\$m
Financial years						
1995-96	12 212	1 148.3	3 527	272.4	15 854	2 386.7
1996-97	13 632	1 348.9	2 013	175.8	15 742	2 901.8
1997-98	15 828	1 634.2	2 526	222.0	18 460	2 943.8
Months						
May 97	1 376	140.5	195	16.8	1 576	318.9
Jun 97	1 151	120.6	103	9.6	1 254	198.4
Jul 97	1 283	129.8	223	17.4	1 531	268.5
Aug 97	1 225	125.1	132	10.0	1 373	232.1
Sep 97	1 216	129.0	95	10.3	1 328	211.7
Oct 97	1 323	136.4	183	14.2	1 508	267.2
Nov 97	1 355	142.2	184	12.4	1 541	250.2
Dec 97	1 214	123.4	171	11.7	1 412	221.6
Jan 98	976	105.1	178	17.2	1 155	193.7
Feb 98	1 162	120.2	278	18.6	1 441	224.4
Mar 98	1 363	143.7	380	29.1	1 747	251.4
Apr 98	1 376	144.1	196	19.1	1 576	218.0
May 98	1 504	151.9	288	43.6	1 794	318.3
Jun 98	1 831	183.3	218	18.4	2 054	286.7
Jul 98	1 548	163.2	151	16.3	1 707	283.2

(a) Includes alterations, additions, conversions and non-residential buildings.

Source: ABS Catalogue No. 8731.5.

NEW HOUSES APPROVED, WESTERN AUSTRALIA



Source: ABS Catalogue No. 8731.5.

5.2

NON-RESIDENTIAL BUILDING APPROVED

	Private	Public	Total
	\$m	\$m	\$m
Financial Years			
1995-96	692.1	111.0	803.1
1996-97	773.9	430.0	1204.5
1997-98	706.7	193.3	899.8
Months			
May 97	63.1	83.3	146.4
Jun 97	46.3	7.7	54.1
Jul 97	71.2	34.0	105.3
Aug 97	51.8	29.6	81.4
Sep 97	54.3	2.3	56.5
Oct 97	64.6	33.7	98.3
Nov 97	70.5	8.9	79.4
Dec 97	57.3	13.0	70.3
Jan 98	46.3	11.3	57.6
Feb 98	59.8	9.3	69.1
Mar 98	60.2	2.3	62.4
Apr 98	33.7	8.6	42.3
May 98	74.6	31.5	106.1
Jun 98	62.4	8.8	71.1
Jul 98	65.5	20.8	86.3

Source: ABS Catalogue No. 8731.5.

*For more information regarding Building Approvals, please contact
Phil Smythe on (08) 9360 5932.*

5.3

SELECTED HOUSING PRICE INDEXES: PERTH

	Materials used in house building	Established homes	Project homes
Financial Years			
1995-96	114.8	108.2	101.6
1996-97	115.3	109.2	101.3
1997-98	115.9	113.3	102.2
Quarters			
Mar 97	115.3	110.4	101.2
Jun 97	115.8	110.9	101.2
Sep 97	116.0	112.2	101.3
Dec 97	115.8	112.8	101.4
Mar 98	115.7	113.7	102.5
Jun 98	115.9	114.4	103.6

Base of each index: 1989-90 = 100.0.

Source: ABS Catalogue Nos. 6408.0 and 6416.0.

5.4

PRICE INDEX OF MATERIALS USED IN BUILDING OTHER THAN HOUSE BUILDING, PERTH

SPECIAL SERIES.....

	<i>All groups</i>	<i>All Electrical materials</i>	<i>All Mechanical services</i>	<i>All Plumbing materials</i>
Financial years				
1995-96	113.2	113.0	112.3	120.1
1996-97	114.6	110.6	113.3	119.2
1997-98	114.6	109.3	113.4	124.6
Quarters				
Mar 97	114.9	110.7	113.2	119.9
Jun 97	115.2	111.0	112.9	121.6
Sep 97	115.3	111.0	113.1	124.7
Dec 97	114.8	109.9	113.3	124.9
Mar 98	114.2	107.2	113.2	124.6
Jun 98	114.2	109.2	113.8	124.1

SELECTED MAJOR BUILDING MATERIALS.....

	<i>Structural timber</i>	<i>Clay bricks</i>	<i>Ready mixed concrete</i>	<i>Structural steel</i>	<i>Aluminium windows</i>
Financial years					
1995-96	109.3	120.7	115.0	107.5	118.1
1996-97	106.6	124.1	120.1	113.9	117.0
1997-98	106.8	127.8	117.4	116.5	117.9
Quarters					
Mar 97	106.9	123.6	121.0	116.1	116.4
Jun 97	107.2	125.5	120.1	116.1	118.8
Sep 97	107.2	127.4	118.8	116.1	118.8
Dec 97	107.4	127.4	117.2	116.1	118.8
Mar 98	106.4	127.6	116.8	116.7	117.0
Jun 98	106.1	128.8	116.8	116.9	117.0

Base of each index 1989-90 = 100.0.

Source: ABS Catalogue No. 6407.0.

For more information regarding these tables, please contact Peter Hodgson on (08) 9360 5922.

6.1

LIVESTOCK SLAUGHTERED ('000)

	CATTLE.....			OTHER.....			
	Bulls, bullocks, steers	Cows, heifers	Total (excluding calves)	Calves	Sheep	Lambs	Pigs
Financial Years							
1995-96	218	182	400	3	2 833	1 594	563
1996-97p	192	214	407	6	2 635	2 081	550
1997-98 p	198	250	448	6	2 717	1 856	550
Months							
Apr 97 p	14	16	30	-	214	198	45
May 97 p	14	17	31	1	238	228	49
Jun 97 p	13	15	28	-	118	140	53
Jul 97 p	14	18	32	1	137	154	47
Aug 97 p	14	18	32	-	212	154	45
Sep 97 p	18	19	37	-	282	221	45
Oct 97p	21	22	43	-	327	219	43
Nov 97p	20	19	39	-	278	175	42
Dec 97p	19	23	42	-	216	133	44
Jan 98 p	16	28	44	-	263	118	41
Feb 98 p	16	26	42	1	252	134	48
Mar 98 p	18	18	37	1	223	126	47
Apr 98 p	15	19	34	-	225	137	45
May 98 p	15	19	34	-	208	158	53
Jun 98 p	15	18	34	-	99	129	50

Source: ABS Catalogue No. 7215.0.

6.2

MEAT PRODUCED (a)(Tonnes Carcass Weight)

	Beef	Veal	Mutton	Lamb	Pig meat
Financial Years					
1995-96	94 859	213	57 428	28 139	35 341
1996-97p	91 369	319	52 164	35 701	38 837
1997-98p	102 482	312	56 442	33 581	35 499
Months					
Apr 97 p	6 474	20	4 416	3 366	3 144
May 97 p	6 836	40	4 570	3 959	3 729
Jun 97 p	6 187	24	2 292	2 591	3 888
Jul 97 p	7 367	27	2 761	2 819	3 072
Aug 97 p	7 277	23	4 416	2 575	2 939
Sep 97 p	8 744	27	6 090	3 992	3 014
Oct 97 p	10 077	26	6 978	3 933	2 812
Nov 97 p	9 249	23	5 895	3 164	2 654
Dec 97 p	9 665	26	4 488	2 416	2 724
Jan 98 p	9 934	22	5 432	2 170	2 285
Feb 98 p	9 397	37	5 044	2 427	3 100
Mar 98 p	8 216	30	4 552	2 271	3 048
Apr 98 p	7 425	22	4 596	2 520	2 998
May 98 p	7 556	23	4 046	2 889	3 495
Jun 98 p	7 576	29	2 143	2 405	3 359

(a) Red meat is shown in carcass weight and excludes offal.

Source: ABS Catalogue No. 7215.0.

For more information regarding these tables, please contact Dean Souter on

(08) 9360 5180.

6.3

WOOL RECEIVALS AND LIVE SHEEP EXPORTS

	RECEIVALS OF TAXABLE WOOL BY BROKERS AND DEALERS(a).....		EXPORT OF LIVE SHEEP (b).....		
	Bales	Tonnes	Quantity '000	Gross Value \$'000	Gross Weight '000t
Financial Years					
1995-96	931 048	165 842	4 690.6	181 069	232.3
1996-97 p	909 768	161 708	3 747.5	136 613	188.5
1997-98 p	813 758	149 387	r 3 024.7	r 120 473	153.9
Months					
May 97 p	44 266	7 801	323.5	12 095	16.1
Jun 9 7 p	37 431	6 675	264.6	10 595	12.0
Jul 97 p	63 341	11 269	230.8	9 380	11.6
Aug 97 p	89 211	15 839	113.2	4 755	6.1
Sep 97 p	79 760	14 215	291.4	10 891	14.3
Oct 97 p	129 349	22 926	336.4	13 209	17.7
Nov 97 p	79 648	14 086	241.4	9 778	12.6
Dec 97 p	42 269	7 328	314.0	12 640	17.1
Jan 98 p	57 774	10 338	202.8	8 895	9.7
Feb 98 p	85 118	15 150	234.0	8 928	11.5
Mar 98 p	86 941	15 513	324.1	12 392	17.6
Apr 98 p	53 128	11 072	r 256.4	r 10819	r 13.3
May 98 p	30 412	8 006	r 250.6	r 9871	r 11.8
Jun 98 p	16 807	3 646	229.8	8 915	10.6
Jul 98 p	n.y.a	n.y.a	166.3	6 356	8.0

(a) Source: National Council of Wool Selling Brokers.

(b) Source: ABS FASTTRACCS Service.

For more information regarding this table, please contact Dean Souter on (08) 9360 5180.

6.4

ENERGY PRODUCTION

	Coal(a)	Electricity generated	Gas for distribution(b)	Crude oil(c)(d)	Natural gas(d)
	'000 tonnes	million kWh	million MJ	mega-litres	million m ³
Financial Years					
1994-95	5 882	16 756	186 658	12 680	15 714
1995-96	5 897	17 422	181 710	9 676	16 766
1996-97	5 557	16 693	204 256	15 974 p	16 713 p
Months					
Apr 97	407	1 302	17 147		
May 97	393	1 315	18 506		
Jun 97	470	1 404	17 594	3 938 p	3 952 p
Jul 97	413				
Aug 97	482				
Sep 97	522	4 271	56 580	4 589 p	4 633 p
Oct 97	484				
Nov 97	580				
Dec 97	464	4 155	58 095	4 465 p	4 676 p
Jan 98	496				
Feb 98	500				
Mar 98	409	4 608	57 285	3 975 p	4 432 p
Apr 98	397				
May 98	520				
Jun 98	442	n.y.a	n.y.a	n.y.a	n.y.a

(a) Source: Department of Minerals and Energy.

(b) Available for issue through mains.

(c) Includes condensate.

(d) Source: Australian Bureau of Agriculture and Resource Economics.

*For more information regarding these tables, please contact
Pam Prince on (08) 9360 5207.*

6.5

MINERAL EXPLORATION: EXPENDITURE BY TYPE OF MINERAL SOUGHT

	METALLIC MINERALS.....			NON-METALLIC MINERALS.....		Total minerals
	Base metals(a)	Gold	Other	Diamonds	Other	
	\$m	\$m	\$m	\$m	\$m	
Financial Years						
1994-95	58.8	379.4	17.9	35.2	5.6	495.5
1995-96	89.0	367.8	6.9	33.8	6.0	519.5
1996-97	88.1	531.7	n.a.	38.6	n.a.	704.7
Quarters						
Dec 96	20.1	147.9	n.a.	11.5	n.a.	187.7
Mar 97	17.4	108.1	1.1	7.5	0.4	144.2
Jun 97	27.0	155.5	1.4	10.8	1.2	210.0
Sep 97	28.1	138.2	0.5	8.3	0.1	182.7
Dec 97	31.4	109.6	0.5	9.5	1.2	162.3
Mar 98	24.7	100.0	0.2	6.0	0.4	142.0

(a) Includes copper, lead, zinc, silver, nickel and cobalt.

Source: ABS Catalogue No. 8412.0.

6.6

MINERAL PRODUCTION

	Iron ore	Bauxite	Gold	Ilmenite	Nickel	Diamonds
	'000 tonnes	'000 tonnes	tonnes	'000 tonnes	'000 tonnes	'000 carats
Financial Years						
1994-95	132 743	26 852	187.3	1 631	94	43 590
1995-96	143 489	28 250	206.5	1 871	105	42 566
1996-97	150 711	27 466	226.7	1 910	115	37 120
Quarters						
Mar 97	35 864	6 722	56.0	484	28	7 036
Jun 97	38 667	7 144	59.7	490	30	9 399
Sep 97	38 917	7 148	59.0	538	33	10 423
Dec 97	41 052	7 038	63.0	536	33	13 317
Mar 98	39 465	7 175	60.1	556	33	9 573

Source: Australian Bureau of Agricultural and Resource Economics.

For more information regarding these tables, please contact
Pam Prince on (08) 9360 5207.

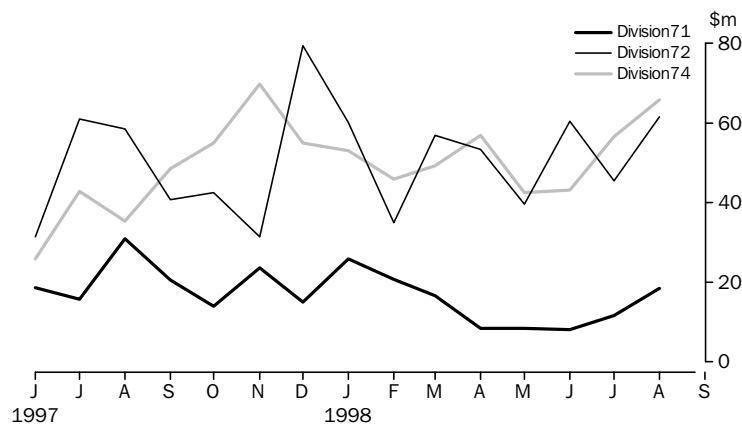
7.1

IMPORTS BY SELECTED DIVISIONS

	33	71	72	74	78
	Petroleum, petroleum products, etc	Power generating machinery and equipment	Machinery specialised for particular industries	General industrial machinery and equipment	Road vehicles
	\$m	\$m	\$m	\$m	\$m
Financial Years					
1995-96	768.9	356.1	510.3	345.7	794.5
1996-97	1 043.6	309.8	696.8	420.9	811.7
1997-98	802.7	208.0	618.8	596.7	1 051.9
Months					
Jun 97	76.3	18.6	31.4	25.9	58.4
Jul 97	71.9	15.7	61.0	42.8	87.8
Aug 97	61.1	30.8	58.5	35.3	76.1
Sep 97	90.2	20.6	40.6	48.5	86.2
Oct 97	70.7	14.0	42.4	55.0	100.2
Nov 97	80.9	23.6	31.4	69.7	87.4
Dec 97	91.4	15.0	79.4	55.0	94.1
Jan 98	54.1	25.9	60.1	52.9	87.9
Feb 98	59.3	20.8	35.0	45.8	74.9
Mar 98	51.7	16.6	57.0	49.2	91.2
Apr 98	49.8	8.5	53.3	56.9	84.7
May 98	57.0	8.5	39.7	42.5	86.5
Jun 98	63.3	8.1	60.4	43.2	94.8
Jul 98	65.3	11.5	45.5	56.5	81.9
Aug 98	80.4	18.4	61.6	65.9	88.1

Source: ABS FASTTRACCS Service.

IMPORTS BY SELECTED DIVISION



Source: ABS FASTTRACCS Service.

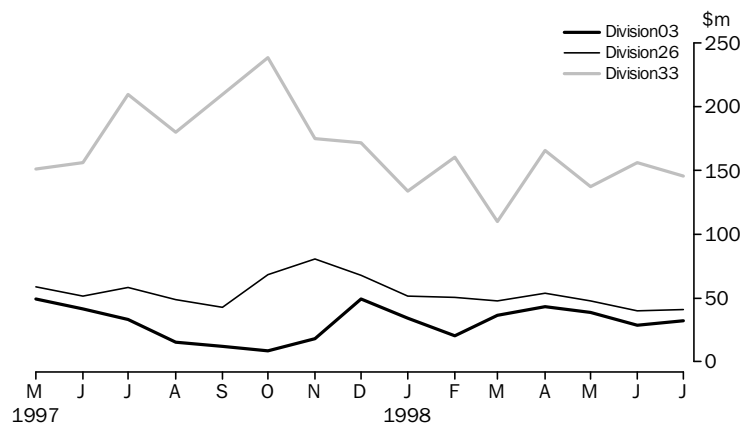
7.2

EXPORTS BY SELECTED DIVISIONS

	03	04	26	28	33
	Fish, crustaceans, molluscs, etc	Cereals and cereal preparations	Textile fibres and waste (excluding yarn or fabric)	Metalliferous ores and metal scrap	Petroleum, petroleum products etc.
	\$m	\$m	\$m	\$m	\$m
Financial Years					
1995-96	364.2	1 874.9	692.6	3 221.8	1 586.0
1996-97	371.3	1 667.7	646.5	3 614.6	1 942.8
1997-98	337.2	1 651.0	655.2	4 213.8	2 046.8
Months					
May 97	49.0	120.8	58.8	356.6	151.2
Jun 97	41.4	104.6	51.3	339.2	155.9
Jul 97	33.2	94.9	58.0	326.8	209.8
Aug 97	15.3	73.5	48.6	371.4	180.2
Sep 97	12.1	103.9	42.2	355.1	209.7
Oct 97	8.4	139.0	68.4	313.7	238.6
Nov 97	17.8	116.7	80.2	368.8	175.1
Dec 97	49.1	196.4	67.5	399.1	171.5
Jan 98	34.0	211.5	51.7	308.4	133.6
Feb 98	20.3	146.3	50.1	319.7	160.4
Mar 98	36.3	109.0	47.7	334.9	109.8
Apr 98	43.3	153.0	53.7	364.6	165.6
May 98	38.9	136.4	47.3	381.3	137.2
Jun 98	28.5	170.8	39.9	370.6	156.4
July 98	31.8	118.5	40.9	360.8	145.3

Source: ABS FASTTRACCS Service.

EXPORTS BY SELECTED DIVISION



Source: ABS FASTTRACCS Service.

For further information regarding these tables, please contact Neil Griffin on (08) 9360 5918.

8.1

NEW MOTOR VEHICLE REGISTRATIONS (a)

	WESTERN AUSTRALIA.....					PERTH STATISTICAL DIVISION.....	
	Passenger vehicles	Light commercial vehicles	Trucks and buses	Motorcycles and scooters Total(b)	Motorcycles and scooters	Motorcycles and scooters Total(b)	Motorcycles and scooters
Financial Years							
1995-96	51 319	10 838	2 324	64 481	2 441	51 514	1 648
1996-97	56 984	10 828	2 207	70 019	2 692	54 721	1 837
1997-98	67 675	11 486	2 207	81 456	3 103	63 131	2 104
Months							
May 97	5 072	909	183	6 164	234	5 089	162
Jun 97	5 267	1 254	207	6 728	238	5 063	173
Jul 97	5 409	905	173	6 487	185	5 151	114
Aug 97	5 000	756	181	5 937	208	4 792	133
Sep 97	5 339	786	149	6 297	196	4 977	129
Oct 97	6 334	934	220	7 488	436	5 832	352
Nov 97	5 435	923	175	6 533	290	5 066	189
Dec 97	5 844	946	187	6 977	300	5 356	180
Jan 98	4 860	845	158	5 863	232	4 437	168
Feb 98	5 143	956	191	6 290	258	4 763	166
Mar 98	5 745	1 017	197	6 959	241	5 285	148
Apr 98	5 059	929	202	6 189	290	4 782	200
May 98	6 144	1 108	204	7 456	233	5 768	152
Jun 98	7 362	1 380	235	8 977	234	6 902	173
Jul 98	6 064	937	238	7 239	264	5 702	173

(a) Excludes plant and equipment, caravans and trailers. (b) Excludes motor cycles.

Source: Unpublished New Motor Vehicle Registrations (9303.5.40.001).

8.2

VEHICLE REGISTRATION STATISTICS (a)

	PASSENGER VEHICLES.....		OTHER VEHICLES.....		TOTAL.....	
	Original	Trend	Original	Trend	Original	Trend
Months						
May 97	5 072	4 953	1 092	1 105	6 164	6 058
Jun 97	5 267	5 052	1 254	1 097	6 521	6 149
Jul 97	5 409	5 179	1 078	1 092	6 487	6 271
Aug 97	5 000	5 315	937	1 091	5 937	6 406
Sep 97	5 339	5 428	958	1 098	6 297	6 526
Oct 97	6 334	5 495	1 154	1 107	7 488	6 602
Nov 97	5 435	5 510	1 098	1 122	6 533	6 632
Dec 97	5 844	5 490	1 133	1 137	6 977	6 608
Jan 98	4 860	5 480	1 003	1 152	5 863	6 597
Feb 98	5 143	5 507	1 147	1 164	6 290	6 654
Mar 98	5 745	5 586	1 214	1 173	6 959	6 808
Apr 98	5 059	5 694	1 131	1 181	6 189	7 037
May 98	6 144	5 828	1 312	1 190	7 456	7 299
Jun 98	7 362	6 331	1 615	1 216	8 977	7 547
Jul 98	6 064	6 345	1 175	1 225	7 239	7 570

(a) Excludes motorcycles, plant and equipment, caravans and trailers.

Source: Unpublished New Motor Vehicle Registrations (9303.5.40.001).

For more information regarding these tables, please contact Cheryl Smith on

(08) 9360 5242.

9.1

PRIVATE NEW CAPITAL EXPENDITURE BY SELECTED INDUSTRY GROUPS

	SELECTED INDUSTRY.....			TOTAL.....	
	<i>Mining</i>	<i>Manufacturing</i>	<i>Other selected industries</i>	<i>Original</i>	<i>Seasonally adjusted</i>
Financial Years					
1995-96	4 285	1 046	2 575	7 907	7 899
1996-97	4 158	625	1 834	6 617	6 627
1997-98	5 798	1 125	1 954	8 877	8 858
Quarters					
Mar 97	1 063	145	323	1 531	1 645
Jun 97	1 168	153	424	1 745	1 666
Sep 97	1 190	194	426	1 810	1 966
Dec 97	1 489	337	552	2 377	2 161
Mar 98	1 473	240	479	2 191	2 353
Jun 98	1 647	355	498	2 499	2 377

Source: ABS Catalogue No. 5646.0.

For further information, please contact Ian Mackley on (08) 9360 5115

10.1

STATISTICAL SUMMARY

WESTERN AUSTRALIA.....

<i>Indicator</i>	<i>Period</i>	<i>Unit</i>	<i>Current Australian figure</i>	<i>Current figure</i>	<i>Change from last period (%)</i>	<i>Figure one year ago</i>	<i>Change from one year ago(%)</i>
Population							
Estimated resident population	Dec qtr 97 p	'000	18 631.1	1 811.1	0.3	1 781.9	1.6
Natural increase	Dec qtr 97 p	No.	31 861	3 303	12.5	3 369	-2.0
Tourism							
<i>Hotels, motels etc and serviced apartemts</i>							
Guest arrivals	Mar qtr 98	'000	7 299	564	n.a.	n.a.	n.a
Guest rooms available	Mar qtr 98	No.	174 194	16 596	n.a.	16 205	2.4
Room occupancy rates	Mar qtr 98	%	58	59	n.a.	58	0.7
<i>Overseas visitors</i>							
Short-term arrivals	Jun 98	No.	304 200	27 410	-3.1	28 540	-4.0
Long-term arrivals	Jun 98	No.	5 630	700	20.7	680	2.9
<i>Resident Departures</i>							
Short-term departures	Jun 98	No.	282 300	34 750	5.0	29 910	16.2
Long-term departures	Jun 98	No.	5 650	650	-11.0	550	11.2
Employment							
<i>Employed persons</i>							
Trend	Aug 98	'000	8 608.2	887.2	0.2	860.9	3.1
<i>Unemployed persons</i>							
Trend	Aug 98	'000	768.1	68.8	0.7	65.0	5.8
<i>Participation rate</i>							
Trend	Aug 98	%	63.4	66.7	0.0	65.8	1.4
<i>Unemployment rate</i>							
Trend	Aug 98	%	8.2	7.2	0.0	7.0	2.9
<i>Full-time adult average weekly earnings</i>							
<i>Trend</i>							
Males	May 98	\$	829.50	863.90	1.5	819.50	5.4
Females	May 98	\$	660.10	628.30	1.1	605.10	3.8
Persons	May 98	\$	725.90	778.70	1.2	740.90	5.1
Retail							
<i>Monthly retail turnover</i>							
Original	Jul 98	\$m	11 468.6	1 142.0	6.8	1 097.2	4.1
Trend	Jul 98	\$m	11 504.3	1 154.5	1.2	1 118.1	3.2
Construction							
<i>Building Approvals</i>							
Dwelling Units	Jul 98	No	14 414	1 707	-16.9	1 531	11.5
Value of all building	Jul 98	\$m	2 708.3	283.2	-1.2	268.5	5.5
<i>House Price Indexes</i>							
Materials used in house building	Jun qtr 98	Index No.	119.0	115.9	0.2	115.8	0.1
Established houses	Jun qtr 98	Index No.	126.9	114.4	0.6	110.9	3.2
Project homes	Jun qtr 98	Index No.	110.8	103.6	1.1	101.2	2.4
Mineral Exploration							
Gold	Mar qtr 98	\$m	136.1	100.0	-8.8	108.1	-7.5
Other minerals	Mar qtr 98	\$m	84.3	42.0	-20.3	36.1	16.3
Overseas Trade							
Imports	Jul 98	\$m	8 917.4	902.4	-0.9	586.2	53.9
Exports	Jul 98	\$m	7 484.9	1 998.8	-6.5	1 719.0	16.3
Transport							
<i>Passenger vehicle registrations</i>							
Original	Jul 98	No.	63 188	6 064	-17.6	5 409	12.1
Trend	Jul 98	No.	61 063	6 345	2.3	5 179	22.5
<i>Total registrations</i>							
Original	Jul 98	No.	73 969	7 239	-19.4	6 487	11.6
Trend	Jul 98	No.	71 660	7 570	2.0	6 271	20.7
Finance							
<i>Private New Capital Expenditure</i>							
Original	Jun qtr 98	\$m	12 305	2 499	14.1	1 745	43.2
Seasonally adjusted	Jun qtr 98	\$m	11 539	2 377	1.0	1 666	42.7

SELF-HELP ACCESS TO STATISTICS

PHONE Call 1900 986 400 for the latest statistics on CPI, Labour Force, Earnings, National Accounts, Balance of Payments and other topics. (Call cost is 75c per minute)

INTERNET <http://www.abs.gov.au>

LIBRARY A range of ABS publications is available from public and tertiary libraries Australia wide. Contact your nearest library to determine whether it has the ABS statistics you require.

WHY NOT SUBSCRIBE?

PHONE +61 1300 366 323

FAX +61 3 9615 7848

CONTACTING THE ABS

ABS provides a range of services, including: a telephone inquiry service; information consultancy tailored to your needs; survey, sample and questionnaire design; survey evaluation and methodological reviews; and statistical training.

<i>INQUIRIES</i>	<i>By phone</i>	<i>By fax</i>
Canberra	02 6252 6627	02 6253 1404
Sydney	02 9268 4611	02 9268 4668
Melbourne	03 9615 7755	03 9615 7798
Brisbane	07 3222 6351	07 3222 6283
Perth	08 9360 5140	08 9360 5955
Adelaide	08 8237 7400	08 8237 7566
Hobart	03 6222 5800	03 6222 5995
Darwin	08 8943 2111	08 8981 1218

POST Client Services, ABS, PO Box 10, Belconnen, ACT 2616

EMAIL client.services@abs.gov.au



2130550009982
ISSN 0727-2367

RRP \$17.50